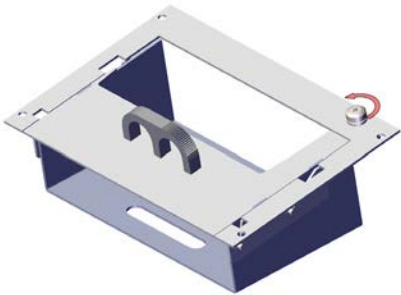
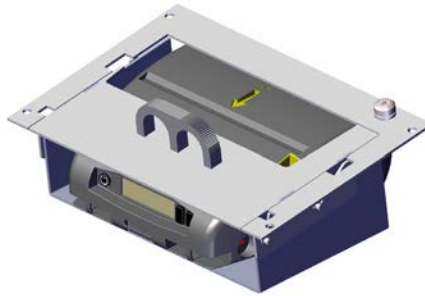
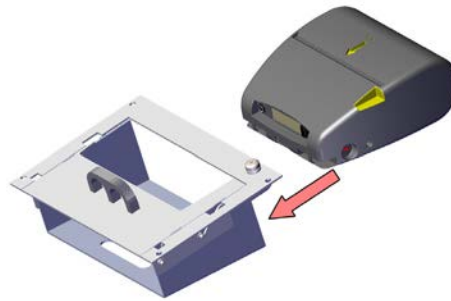




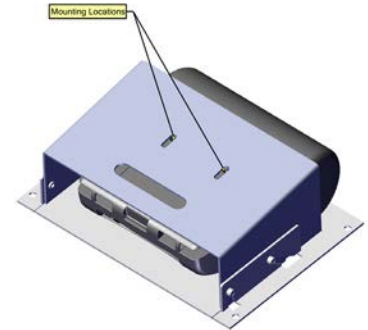
INSTALLATION INSTRUCTIONS PRINTER FACEPLATE for ZEBRA 4" PRINTER



Turn knob to tighten and secure the two faceplate pieces together.



Slide Printer into the faceplate beginning at the taller/wider opening.



Flip the faceplate and printer over and tighten two small screws on the bottom of the printer/faceplate to secure the printer.