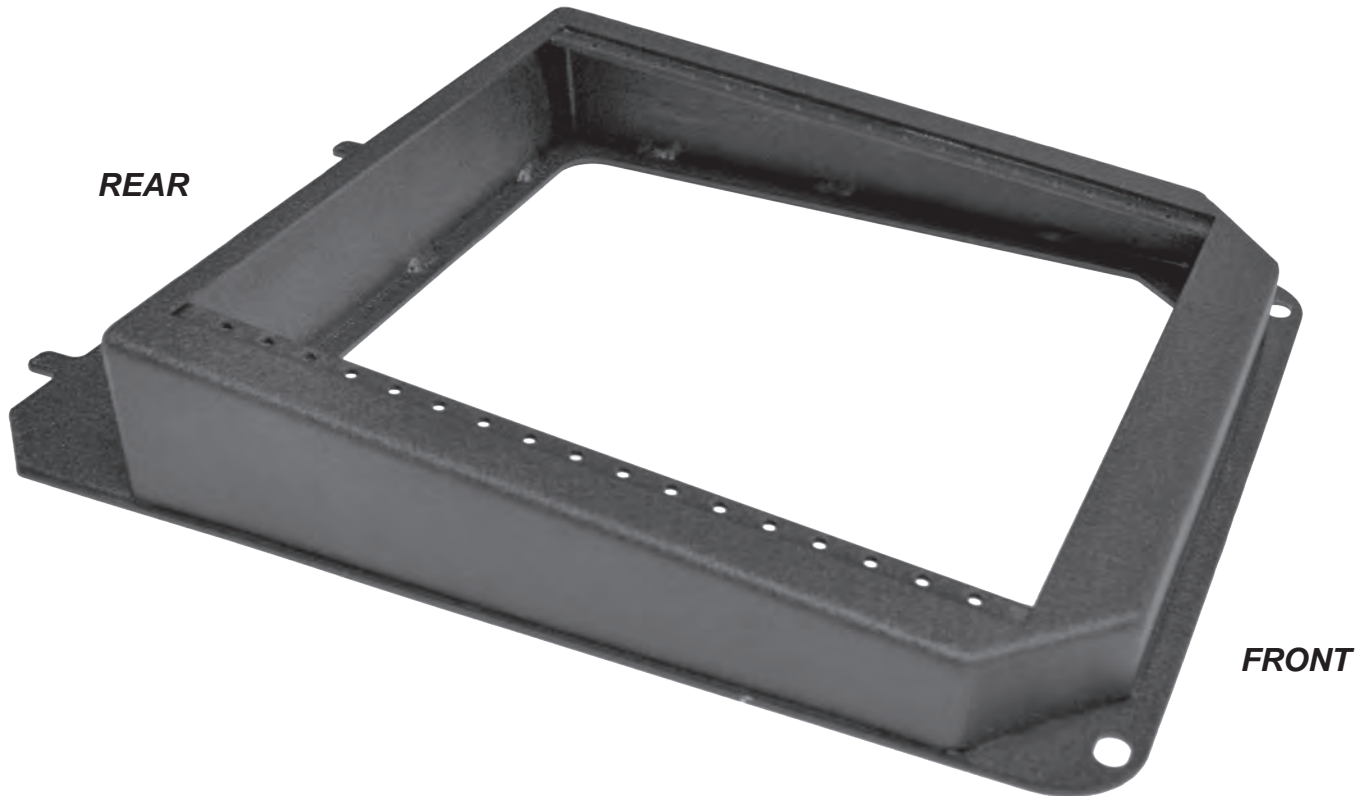




WWW.JOTTODESK.COM
877.455.6886



CC INSTALLATION INSTRUCTIONS **('07-'14 Tahoe Contour Console)**

STEP 1: Remove factory cup holder by snapping out of console system.

STEP 2: Underneath where cup holder was stored, you will find a plastic insert. Remove this by pulling up.

STEP 3: Remove back two screws in factory console using Phillips head screw driver, do not misplace screws.

STEP 4: Guide in the Tahoe insert front first with the tabs sliding under the console.

STEP 5: Push the back into place and reusing screws from Step 3, screw insert together with console.

