



INSTALLATION INSTRUCTIONS  
'15+ CHARGER  
SINGLE CELL LITE  
475-0986





# INSTALLATION INSTRUCTIONS

## '15+ CHARGER

### SINGLE CELL LITE

475-0986



Poly Stiffener  
Tube



Upper Poly  
Center Divider



Upper Poly  
Front Divider



Child Restraint  
Bracket



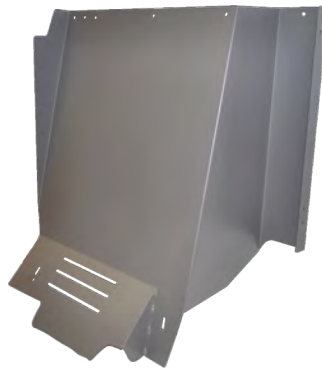
Headliner Handle  
Bracket



B Pillar  
Strap



Lower Steel  
Center Divider



Steel Front  
Divider



Backbone



Outer Mounting  
Foot Bracket



Lower Steel  
Support Bracket



Upper Poly  
Wing



## INSTALLATION INSTRUCTIONS

1. Lift the front edge of the seat cushion up and pull out of vehicle. Set lower seat aside.
2. Loosen 18MM OEM Bolt on the inner OEM seatbelt location on driver side. Attach Lower Steel Support Bracket above lower seat latch and under OEM nut. Tighten nut. (Pic 1)
3. Reinstall seat.
4. Install Lower Steel Center Divider into position and secure to Lower Steel Support Bracket using provided  $\frac{1}{4}$ -20 x  $\frac{3}{4}$  carriage bolt and flange nut. (Pic 2)
5. Remove Front/Rear door trim. Begin removing B Pillar trim by removing the black screw at the top of the trim with T20 Torx Head Bit. The screw is seen by lifting the headliner (Pic 3). The B Pillar trim can be pulled off once the screw is removed.
6. Remove lower bolt on adjustable seat belt bracket and loosely attach Seat Belt Bracket to B Pillar Strap. With the B Pillar Strap snug, bring the bracket to a horizontal position and mark the B-pillar trim enough so the trim doesn't come in contact. **INSTALL TRIM AND TIGHTEN BOLT FULLY LATER.** (Pic 4)
7. The Outer Mounting Foot Brackets should be placed under the P/S rear seat rails. Don't fully tighten bolts. (Note smallest foot closest to the door and the larger foot next to the transmission hump. (Pic 5)
8. Outside of vehicle, remove protective flim and attach Upper Poly Front Divider to Steel Front Divider with provided  $\frac{1}{4}$ -20 x  $\frac{3}{4}$  carriage bolts and flange nuts. Loosely attach the T-blocks to the Steel Front Divider with provided  $\frac{1}{4}$ -20 Socket head cap screws. Slide the Backbone down the Steel Front Divider inserting the T-blocks into the slots. (Pic 6)



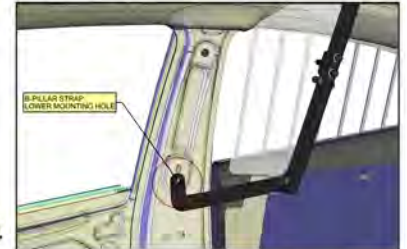
Pic 1



Pic 2



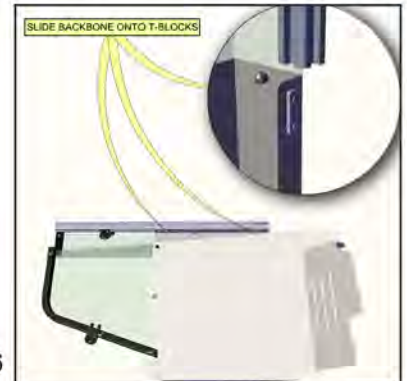
Pic 3



Pic 4



Pic 5



Pic 6





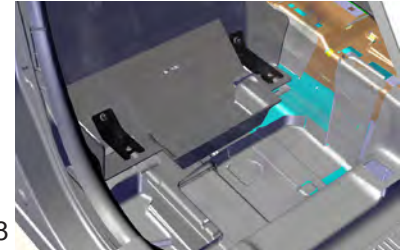
## INSTALLATION INSTRUCTIONS

9. Install the now Assembled Front Divider into vehicle through P/S rear door. (Pic 7) Set into position where the Extruded Backbone will wrap around to driver side of Assembled Center Divider.
10. Secure Assembled Front Divider to Outer Mounting Foot Brackets (From Step 7) and B Pillar Strap using provided  $\frac{1}{4}$ -20 x  $\frac{3}{4}$  carriage bolts and flange nuts through rear seat area. (Pic 8)
11. Peel the protective film from Upper Poly Center Divider. Attach Poly Stiffener Tube to D/S of Upper Poly Center Divider with provided  $\frac{1}{4}$ -20 x 1.75 carriage bolt and flange nut. Install Upper Poly Center Divider through P/S rear door, attaching to Lower Steel Center Divider with the provided  $\frac{1}{4}$ -20 x  $\frac{3}{4}$  carriage bolts and flange nuts. (Pic 9)
12. Install the Child Restraint Bracket by hooking over bar inside the child restraint compartment and secure to Poly Stiffener Tube with provided  $\frac{1}{4}$ -20 x 1.75 carriage bolt and flange nut. (Pic 10)
13. Remove OEM headliner trim piece from P/S using T25 Socket (Pic 12). Attach Headliner Handle Bracket reusing OEM bolts. Secure to Assembled Front Divider using provided  $\frac{1}{4}$ -20 x 1/75 Carriage bolts and flange nuts. (Pic 13)
14. Attach Upper Poly Wing to **FRONT** side of Assembled Front Divider near B Pillar Strap using  $\frac{1}{4}$  x 20 x  $\frac{5}{8}$ " Carriage bolts and flange nuts in the upper and lower holes of the wing.\* (Pic 14). Replace the B-pillar OEM trim and tighten all hardware.

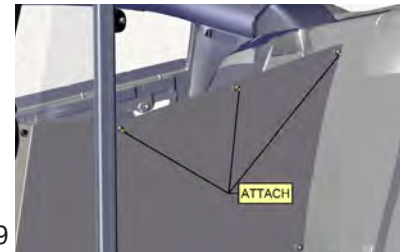
Pic 7



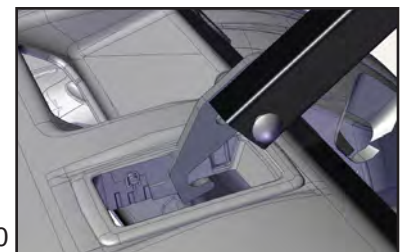
Pic 8



Pic 9



Pic 10



Pic 11



Pic 12



Pic 13



**\*All Carriage Bolts Attach From Prisoner Side.  
Nuts and Nut Covers on D/S.**

