



INSTALLATION INSTRUCTIONS 13+ POLICE INTERCEPTOR SEDAN Vehicle Partition Featuring Unidirectional Recessed Housing

INSTALL BIO-SEAT BEFORE COMPLETING SPACE CREATOR INSTALLATION

Before beginning the installation, confirm that you have received all of the parts for your package.
Read the instructions completely before starting installation.

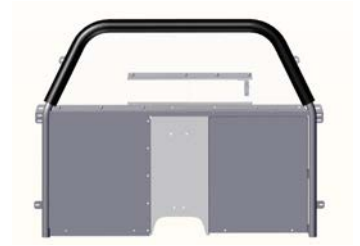


TOOLS NEEDED:

- Ratchet
- 7/16" Socket
- 13 mm Socket
- 7 mm Socket

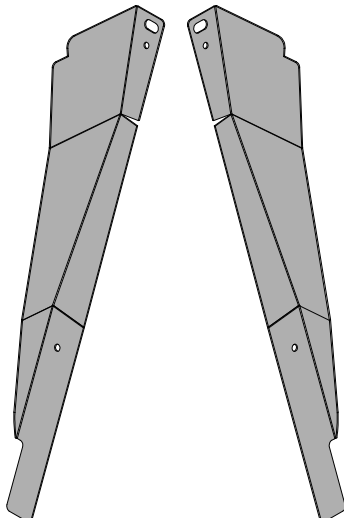
Parts Included:

- Hardware Bag With Necessary Nuts, Bolts, Etc.



DS-

- PS



SCA Wings Set



DS-

- PS

(2) B Pillar Bracket



DS-

- PS

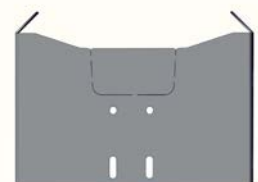
(2) Mounting Foot



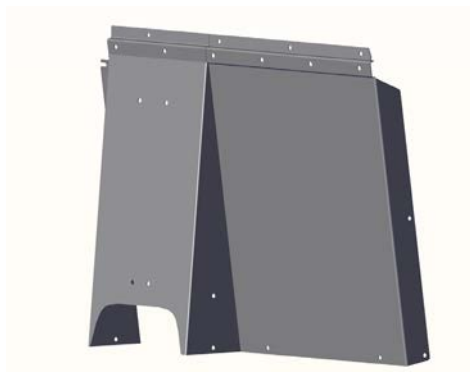
DS-

- PS

(2) B Pillar Strap



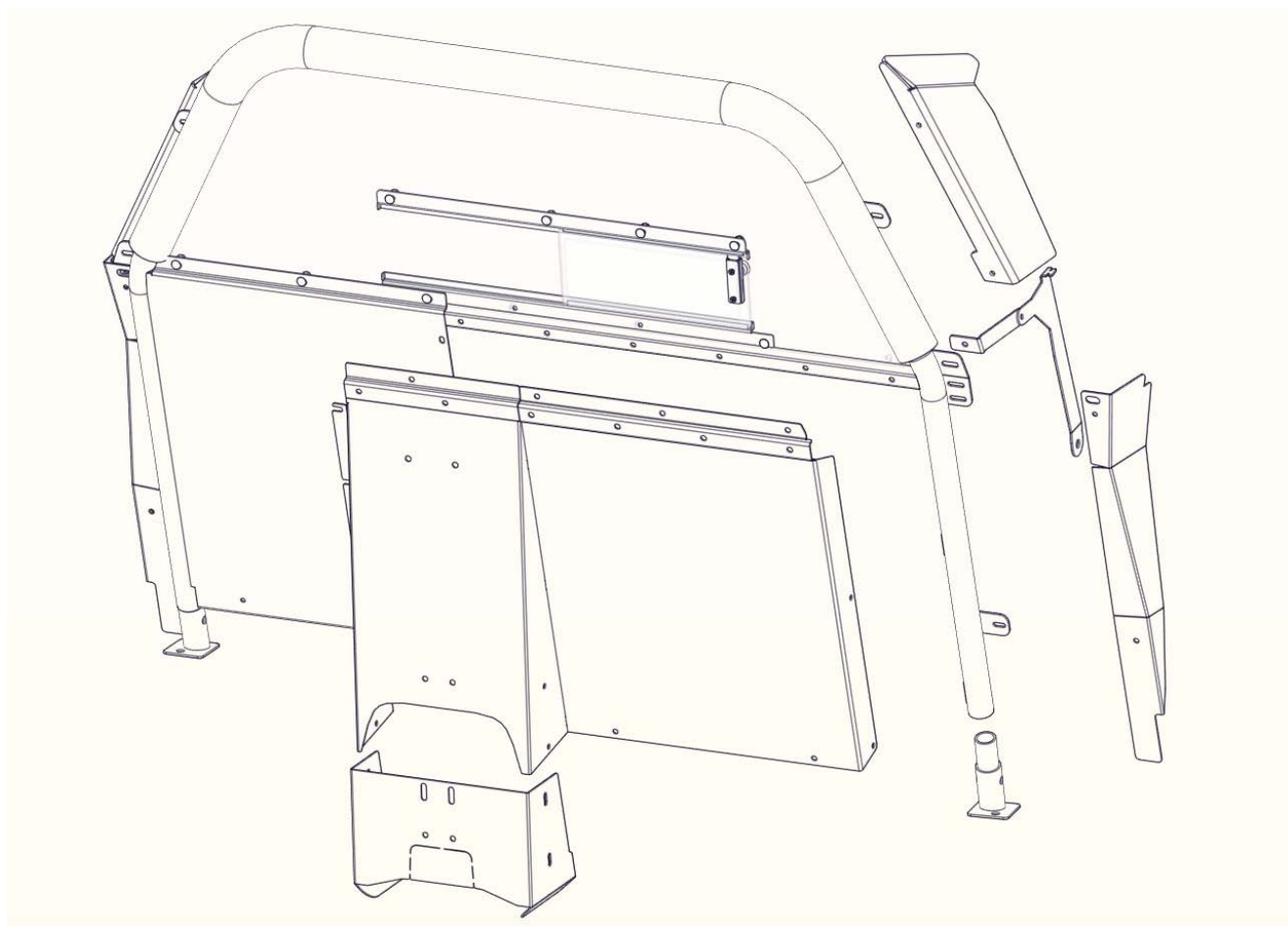
Center HSEP



Uni-Directional
Recessed Housing



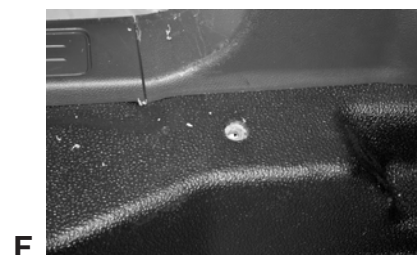
INSTALLATION INSTRUCTIONS





INSTALLATION INSTRUCTIONS

1. Remove Front/Rear door sills/trim
2. Move Front Passenger/Drivers seat all the way forward.
3. Pop out Lower B Pillar Trim from bottom and move away from B Pillar. Lean forward into front seat area. (Pic A)
4. Remove 7mm bolt, exposed from removal of Lower B Pillar trim located at the base of the Upper B Pillar trim. Then pop Upper B Pillar trim away from B Pillar. Set aside for later replacement. Remove OEM seat belt adjuster. (Pic B)
5. Inserting B Pillar Bracket at a 90 degree angle into hole location where OEM seat belt adjuster sat. (Pic C) Once in rotate B Pillar Bracket down and towards front of vehicle.
6. Attach B Pillar Bracket in lower hole opening. Sliding in provided 1/2" whiz nut through lower opening, and secure in place using provided 1/2" socket button head bolt. (Pic D) Reinstall OEM seat belt adjuster, and B Pillar trim marking and cutting out slit allowing B Pillar Bracket to pass through upper trim.
7. Attach B Pillar Strap to B Pillar Bracket using carriage bolt/flange nut (Pic E)
8. On top of threshold into rear seat, pull back rubber carpet to locate the (2) mounting holes for the partition mounting feet. One on passenger side and one on drivers side. (Pic F) LOOK below at #9 for which hole to use.
9. Drill out Rear Hole to (1/2") and install AVK fastener (see instruction sheet)



**You MUST Install Jotto Desk Bio-Seat/Floor Pan
Before Completing Partition Installation**

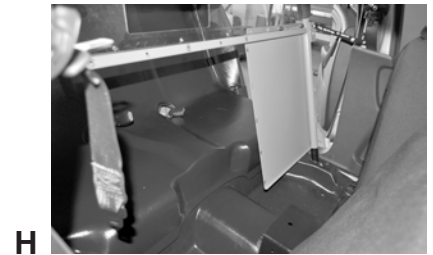


INSTALLATION INSTRUCTIONS

10. Cut a large "X" over AVK in carpet or drill 1/2" hole in dimple in floor pan. Place feet over the holes and secure using provided hardware. (Pic G)
11. Place Partition Frame into vehicle WITHOUT the Unidirectional Recessed Housing (UDRH) installed and from the passenger side of the vehicle. Position onto the mounting feet. **To avoid interference with headliner, remove blue protective film covering window at this time.** Push partition forward to meet the B Pillar Straps. (Pic H)
12. Secure B Pillar Straps to the middle slot of the center partition tab and on the FRONT/OFFICER side of the partition tab. (Pic I)
13. Before you install the UDRH, you will need to remove the hand tightened carriage bolt from lower window channel.
NOTE: Half window partitions can go to Step 15. Full window with security wire partitions will require Step 14.
14. **WHEN INSTALLING THE UDRH, BE CERTAIN UDRH THAT THE SAFETY-WIRE IS INSTALLED ON THE OUTSIDE OF THE UDRH. IT WILL BE NECESSARY TO PULL THE BOTTOM OF THE SAFETY-WIRE OUT SO THE UDRH CAN SLIP UNDERNEATH.** (Pic J)
15. Outside of vehicle – attach the Center HSEP to the UDRH with carriage bolts/flange nuts and finger tighten. Place UDRH into rear of vehicle and secure to the partition frame from the back side with provided carriage bolts/flange nuts. (Pic K) Two people recommended for this.



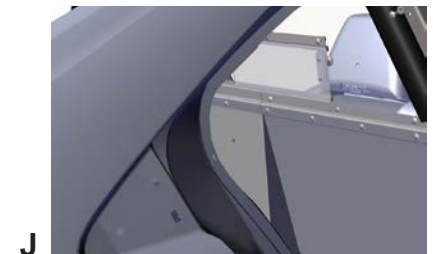
G



H



I



J

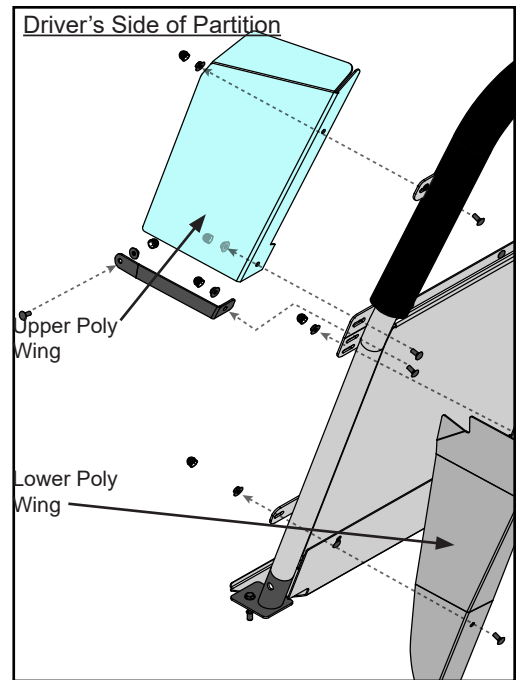


K



INSTALLATION INSTRUCTIONS

Diagram 1



16. Once the UDRH has been attached to the partition frame, secure lower window channel to window and UDRH with 1/4 x 20 x .75 carriage bolts and nuts.
17. Install the optional D/S HSEP to the partition and UDRH, using provided hardware. Install the P/S HSEP to the UDRH, using provided hardware.
18. Attach Lower Steel Wings to bottom slot of the center tab and lower tab on the BACK/PRISONER Side. (Diagram 1)
19. Attach Upper Poly Wings to the FRONT/OFFICER side of the mount tabs. Use the top hole of the middle tab with a carriage bolt. The top of the Poly Wing should be secured with a carriage bolt as well. (Diagram 1)



INSTALLATION INSTRUCTIONS AVK FASTENER

1. Drill out existing hole to 1/2" or drill new hole per installation instructions. (Pic A)
2. Place 5/16-18 x 1.5" long bolt through the 3/8" flange nut and hand thread bolt into the AVK fastener. (Pic B)
3. Place into 1/2" drilled hole (Pic C) and use 9/16" Box End Wrench to secure the flange nut. (Pic D) Apply pressure on the flange nut, pressing AVK fastener into hole. Using an air wrench, tighten the 5/16-18 x 1.5" bolt. (Pic E) This will allow the AVK fastener to secure onto the backside of the metal. Remove 5/16-18 x 1.5" bolt. (Pic F)
4. Follow installation instructions from this point forward.

Installation video can be viewed at :

<http://jottopublicsafety.gojotto.com/additional-categories/downloads.html>



A



B



C



D



E



F

