

NO HOLES MOUNT

DODGE RAM PROMASTER 2014-2022

425-5285

Installation Instructions



**DOES NOT FIT
PROMASTER CITY**

PLEASE CHECK ALL BOX FLAPS AND INSERTS FOR PARTS STORED UNDERNEATH BEFORE DISCARDING BOX. THANK YOU.

WARNING:

Do not install or use this product in any manner which would interfere with any of the vehicles controls, air bags or safety devices. Follow vehicle owner's manual instructions should a dash warning light come on after installation of this desk. Do not install or use this product in any manner which causes a safety hazard for vehicle and/or occupants.

To avoid serious injury do not place this desk or any objects between the air bags and yourself or any passengers. If necessary remove the desk before driving. Store in trunk or other safe place.

***We recommend that you do not work on the Jotto Desk while driving!
Park safely, then use. Remember, driving safely comes first.***

WARNING:

Make sure of and check on a regular basis that all knobs, fastening devices and handles are tight and secure. Repair or replace any faulty or worn parts. All equipment, such as computers, printers, phones, etc. must be safely secured when vehicle is in motion.

DISCLAIMER:

The manufacturer of this product may not be held liable for any accidents, injuries or problems caused by the use or installation of this product.

Specifications subject to change without notice.

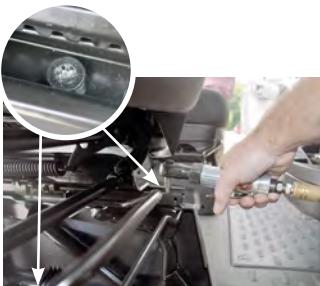


INSTALLATION PROCEDURE

READ INSTRUCTIONS BEFORE BEGINNING INSTALLATION



1. Slide P/S seat completely back. Use T30 torx bit to loosen (2) upper seat bolts on top of pedestal inside seat rails. (PicA)
2. Press on seat back to tilt backwards, slide base underneath seat rails and pedestal.
3. Use 18 mm socket to remove (1) inner lower seat bolt on floor of pedestal. (Pic B)
4. Rotate vertical arm so that floor bracket is over lower seat bolt hole.
5. Hand thread lower seat bolt through floor bracket, into floor of vehicle. Do not tighten.
6. Use T30 torx bit to tighten (2) upper seat bolts from Step 1.
7. Use 7/16 hex socket to tighten (2) vertical arm bolts.
8. Use 18 mm socket to tighten (1) lower seat bolt on floor of pedestal. (Pic C)
9. Assemble the desktop stand to the mount base, starting with the vertical tube. Use 2 hex head cap screws and 2 lock washers to secure vertical tube to mount post.
10. Place articulated swing arm over the 5/8" end of the telescoping rod. Tighten with ratchet handle.
11. Attach desktop to end of articulated swing arm and secure by tightening ratchet handle.



A



B



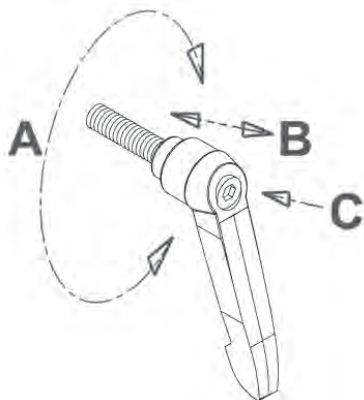
C

TOP ASSEMBLY & ADJUSTMENT



1. Remove Hex Head Cap Screws from stand assembly and place tube over the No-Holes Mount Base.
2. Thread (2) Hex Head Cap Screws with (2) Lock Washers through tube and into front and rear of No Holes Mount post at bottom of tube. (A)
3. Raise inner rod to desired height. Thread (2) Hex Head Cap Screws with (2) Lock Washers into front and rear holes at top of tube. (B)
4. Use provided Hex Key to tighten (4) Hex Head Cap Screws to ensure secure positioning.

RATCHET CLAMP OPERATION



NOTE: Insert the ratchet handle through the unthreaded side of the articulated swing arm and tighten. Going through threaded side first will not allow the arm to tighten properly

To adjust, pull handle out (B) and rotate counter clockwise (A), release and tighten. If needed, use 1/8" hex head wrench for adjustment (C)

NOTE: Ratchet handles are spring loaded and can be readjusted to tighten.

REPLACEMENT COMPONENTS

Ratchet Handle

425-1273



**(2) Hex Head Cap Screws
& (2) Lock Washers**

425-3385



Hex Key

425-3379



Articulated Swing Arm

425-1188

Vertical Tube Assembly

1 Tube & 1 Telescoping Rod (10"/12")

425-5341



No Holes Base

425-3769

JOTTO DESK ACCESSORIES

Specifications subject to change without notice.



Pivoting Cell Phone Holder

425-5299

Allows you to tilt your phone independent of the desktop angle. Mounts to side of 10" x 12" Desktop.



USB Light

425-2490

12" flexible wand with blue LED's and rheostat to adjust brightness. Three foot power cord plugs into cigarette lighter.



Kensington® Masterlock®

425-1317

Computer securing system uses Kensington locking system. Fasten security cable to permanent structure in vehicle.



Screen Support - A-Mod

Model 450-0449

The Screen Support is designed to keep your screen in place while you use your computer. It attaches directly to the A-MOD Desktop and adjusts in height and tilt angle.



Brace Kit

425-5238

The Brace Kit attaches to the stand providing additional support. It can be adjusted in length and mounts to flat, vertical or angled surfaces.



Screen Support - Acd

425-5999

The Screen Support is designed to keep your screen in place while you use your computer. It attaches directly to the ACD Desktop and adjusts in height and tilt angle.



209 W. EASY ST., ROGERS, AR 72756 • JOTTOPUBLICSAFETY.COM • 1/24

Jotto Desk™ is a patented product and Registered Trademark of Assembled Products™ Corporation.

Specifications subject to change without notice.

050-0023-00