



# ABS DOOR PANEL INSTALLATION INSTRUCTIONS '13-'19 FORD PI UTILITY ABS Door Panels and Secure-Grid Window Armor



### INCLUDES:

- (1) Driver Side Door Panel
- (1) Passenger Side Door Panel

### Parts Included:

- Hardware Bag With Necessary Nuts, Bolts, Etc.



Pic 1



Pic 2

### \*\*\*Complete this installation before installing Window Armor\*\*\*

1. Roll windows completely down.
2. With a small flat head screw driver, remove the trim cover plates located on the armrest/grip and behind the small door handle. (Pic 1)
3. Once removed - it exposes (2) 10 mm screws (1 each)...remove both. (Pic 2)
4. At the bottom of the OEM door panel - remove (2) 7 mm screws. (Pic 3)
5. Pull out firmly from the bottom and then pull up and out at the top of the OEM door panel.
6. Remove the power window switch from the door panel.
7. Secure the door latch cable to the door frame so it will not rattle.
8. Make sure the power window switch is connected to the harness. "Bag and Seal" connectors to protect them. Secure inside the door frame with plastic tie. (Pic 4)
9. Unbolt speaker. It will not be used. (Pic 5)
10. Position ABS Door Panels in place of the OEM. Top of ABS Door Panel goes over the first rubber seal that makes up the window track. (Pic 6) The hole closest to the B Pillar is where an OEM bolt goes through. Use provided acorn nut to secure/cover. (Pic 7)
11. Secure around the perimeter of the door frame using provided hardware. (#8 Phillips Screws). 12 screws per side.



Pic 3



Pic 4



Pic 5



Pic 6

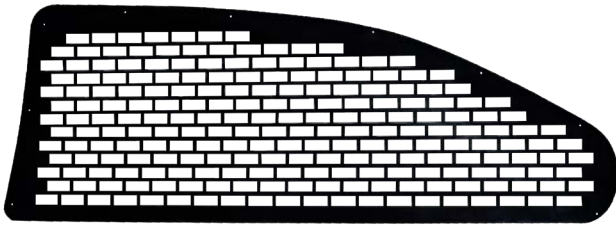


Pic 7

### \*\*\*Window Armor Installation on Opposite Side\*\*\*



# SECURE GRID WINDOW ARMOR INSTALLATION INSTRUCTIONS '13-'19 FORD PI UTILITY ABS Door Panels and Secure-Grid Window Armor



## INCLUDES:

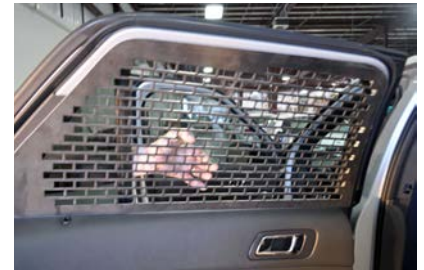
- (1) Driver Side Window Armor
- (1) Passenger Side Window Armor

## Parts Included:

- Hardware Bag With Necessary Nuts, Bolts, Etc.

**\*\*\*Complete ABS Door Panel installation  
before this installation\*\*\***

1. Place Secure Grid Window Armor on the door frame.  
(Pic 1)
2. Curve of Secure Grid Window Armor should be away from prisoner area.
3. There are holes around the perimeter of the Secure Grid Window Armor that match the top curve of door frame. (Pic 2)
4. Use provided hardware (#8 Phillips Screws) to attach Window Armor to Door Frame (Pic 3)



Pic 1



Pic 2



Pic 3

**\*\*\*ABS Door Panel Installation on Opposite Side\*\*\***



209 W. EASY ST., ROGERS, AR 72756 • [www.EVERYTHINGBUTLIGHTS.com](http://www.EVERYTHINGBUTLIGHTS.com) • 3/19

Jotto Desk® is a patented product and Registered Trademark of Assembled Products™ Corporation.  
Specifications subject to change without notice.