



INSTALLATION INSTRUCTIONS

2014+ RAM 1500 SSV SPACE CREATOR

Vehicle Partition Featuring Bidirectional Recessed Housing

(U.S. Patent No. 8,690,216)

Before beginning the installation, confirm that you have received all of the parts for your package.
Read the instructions completely before starting installation.



TOOLS NEEDED:

- Ratchet
- 7/16" Socket
- 10 mm Socket
- 18mm Socket

Parts Included:

- Hardware Bag With Necessary Nuts, Bolts, Etc.

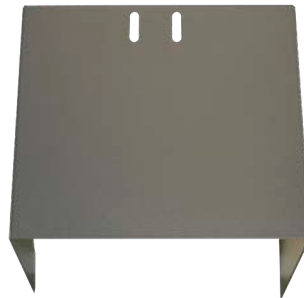


DS-

- PS



Wings Set



Center HSEP



Bi-Directional
Recessed Housing



DS-

- PS

(2) B Pillar Bracket



DS-

- PS

(2) Mounting Foot



INSTALLATION INSTRUCTIONS



Move seats completely forward. Loosen the rear/outer OEM 18 mm seat bolt.



Push seat up slightly to slide the Foot Mount Bracket under seat rail, between rail and carpet. Leave bolt loose at this time. Repeat on other side.



Use a small screw driver to pop the lower cover off of the entry assist handle. Remove 10 mm bolt from inside handle. Repeat on other side.



Use provided socket head screw to attach B Pillar Bracket.



Install Partition frame into vehicle through PS door and position onto mounting feet.



Lean Partition frame forward and loosely attach B Pillar Brackets to middle hole of frame. Center the partition. Once centered, tighten all hardware at this time.



Loosely attach Center HSEP onto BDRH outside of vehicle using (6) carriage bolts and flange nuts.



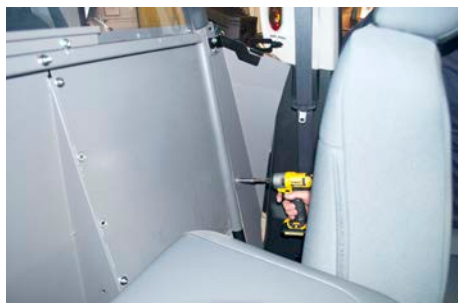
Place BDRH with Center HSEP into vehicle. Attach BDRH to Partition Frame using provided carriage bolts and flange nuts. Push carriage bolts in from prisoner side of partition. Tighten all bolts/nuts.



SOLO INSTALL NOTE: Use masking tape over carriage bolts to hold bolt in place while attaching flange nuts from front side of partition.



INSTALLATION INSTRUCTIONS



Install Lower Steel Wing from prisoner side using (3) carriage bolts and flange nuts. Repeat on other side.



Install Upper Poly Wing from officer side using carriage bolts and flange nuts on the upper and lower hole. Repeat on other side.



Install black caps on all flange nuts.

