

A-MOD DESKTOP OWNER'S MANUAL



GOJOTTO.COM
877-455-6886

IMPORTANT NOTICE:

Please take a few minutes to read through this Owner's Manual before using the product to ensure that your A-MOD Desktop will be operated correctly.

For additional information or if you have questions regarding the mounting or operation of the A-MOD Desktop, please contact Jotto Desk at 877-455-6886 or visit www.gojotto.com.

WARNING:

DO NOT STORE PRODUCT IN VEHICLE AIRBAG DEPLOYMENT ZONE. IT IS NOT RECOMMENDED TO USE A COMPUTER WHILE DRIVING. DISTRACTED DRIVING IS A PREVENTABLE CAUSE OF INJURIES AND PROPERTY DAMAGE. PARK & WORK, STAND & WORK, STORE & DRIVE.

THIS USER MANUAL COVERS THE FOLLOWING MODELS:

- 450-4138 - A-MOD (TALL CLAMPS)
- 450-4139 - A-MOD XL (SHORT CLAMPS)
- 450-4152 - A-MOD CF-33 (SHORT CLAMPS)
- 450-4154 - A-MOD XL (TALL CLAMPS)
- 450-4143 - A-MOD W/ GK PLATE (TALL CLAMPS)
- 450-4144 - A-MOD XL W/ GK PLATE (SHORT CLAMPS)
- 450-4147 - A-MOD W/ GK PLATE (SHORT CLAMPS)
- 450-4153 - A-MOD XL W/ GK PLATE (TALL CLAMPS)

TABLE OF CONTENTS:

| | | | |
|-----------------------------|---|-----------------------------|---|
| Product Specifications..... | 2 | Product Operation..... | 7 |
| Product Customization..... | 3 | Parts & Hardware Guide..... | 8 |

COMPATIBLE LAPTOP DIMENSIONS:

A-MOD Standard Desktop Adjustment Range Dimensions:

Width: **11.25" to 13.625"**

Depth: **9.25" to 11"** (with extensions)

Clamp Height (Tall Clamp): **1" to 2.25"** (Short Clamp): **0.5" to 1.10"**

Weight: **4.65 lbs.** (5.65 lbs. with GK Plate)

A-MOD XL Desktop Adjustment Range Dimensions:

Width: **13.5" to 16"**

Depth: **9.25" to 11"** (with extensions)

Clamp Height (Short Clamp): **0.5" to 1.10"** (Tall Clamp): **1" to 2.25"**

Weight: **5.1 lbs.** (6.1 lbs. with GK Plate)

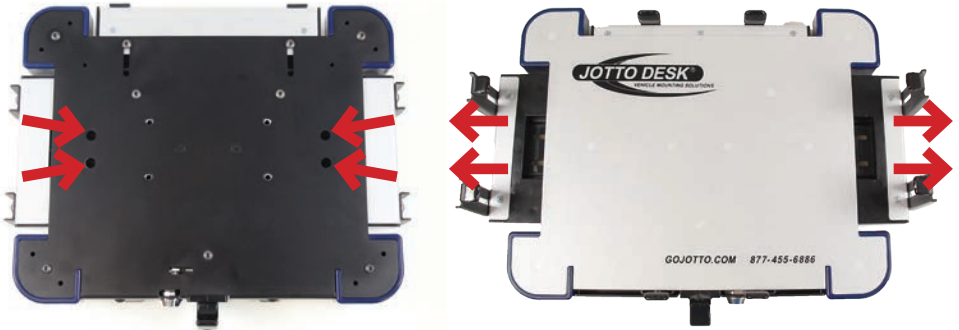
PRODUCT CUSTOMIZATION:

Follow the steps below to achieve a secure fit for your laptop.

1.) Please check to make sure your laptop is powered down, closed and all external devices, including cables/cords have been removed.



2.) Begin by turning the A-MOD Desktop over and loosen (but do not remove) the (4) Side Tray Adjustment Screws, which are located on the bottom tray as shown in the image below. Pull both Side Trays outward as far as they will go and turn the Desktop back over with the silver side facing up.



3.) Place the open laptop onto the A-MOD Desktop and position it as follows: slide the front edge forward so that it is touching the Front Tabs and center the laptop from left to right.

NOTE: During this initial setup, you may need to slide the open laptop under the Side Clamps by angling the front edge of the laptop under the Side Clamps while entering from the back of the unit and then sliding forward until stopping on the Front Tabs.



PRODUCT CUSTOMIZATION: (continued from page 3)

4.) Slide both Side Trays inward until the Side Clamps come in contact with the sides of the laptop, making sure that the Side Clamps fit over the laptop edge. Please note: There may be a small space in between the Side Clamp and laptop surface.



NOTE: If the Side Clamps on your A-MOD Desktop do not slide over the edge of your laptop, you can request an alternate set of Side Clamps from Customer Service at 877-455-6886. Once received, use the steps below to install your new Side Clamps. If the Side Clamps already fit properly, move on to step 5.

4.1) Locate the adjustment screw for each Side Clamp. Remove the lug by loosening the screw with the provided L-shaped Wrench.



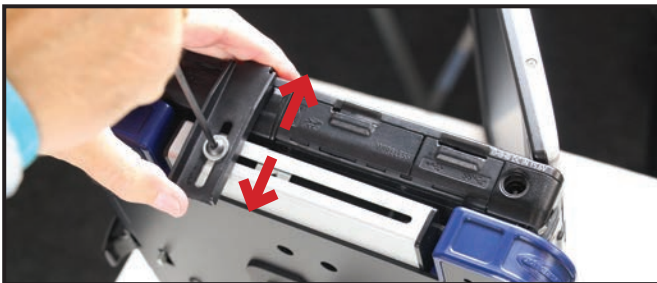
4.2) Using the New Side Clamps, install one New Side Clamp into each the slots that the Original Side Clamps were in previously. Tighten the screws. Ensure that all Side Clamps slide over the top edge of your laptop before moving to step 5.

PRODUCT CUSTOMIZATION: (continued from page 4)

5.) Carefully turn A-MOD Desktop and laptop over and re-tighten the (4) Side Tray Adjustment Screws on the bottom tray. Return the Desktop its' upright position.

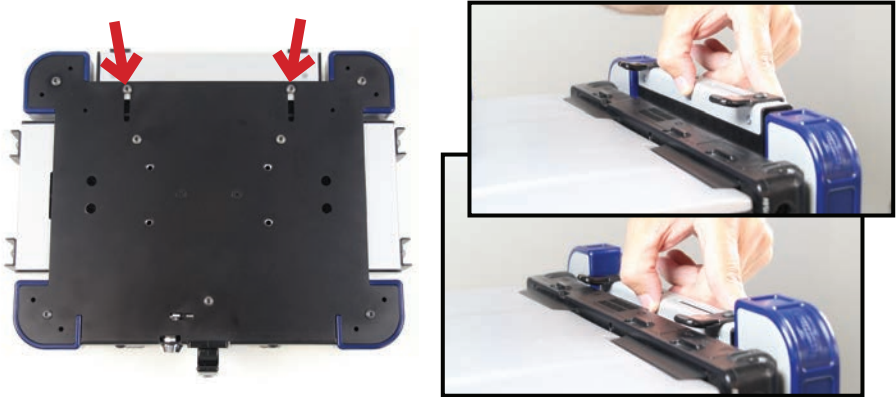
6. Now it is time to make any adjustments needed to the Side Clamps to account for laptop height differences or to allow access to any data ports which may have been blocked by the original clamp positions. One side at a time, loosen the Side Clamp Adjustment screws (but do not remove) as shown in the image below. Adjust the Side Clamps as needed by sliding side to side and/or up and down in the adjustment tracks. All Side Clamps should be pushed as low as possible and touch the top edge of the laptop.

NOTE: If, after lowering all the way, the Side Clamps on your A-MOD Desktop do not touch the top of your laptop, you can request an alternate set of Side Clamps from Customer Service at 877-455-6886. Once received, use steps 4.1 and 4.2 on page 4 to install your new Side Clamps. If the Side Clamps already fit properly, re-tighten Side Clamp Adjustment Screws.



PRODUCT CUSTOMIZATION: (continued from page 5)

7.) Complete the customization with Rear Tray adjustments. Once again turn the A-MOD Desktop over and now loosen (but do not remove) the Rear Tray Adjustment Screws on the bottom panel indicated in the image below. Slide the Rear Tray inward until the rear tabs touch the laptop. Re-tighten the Rear Tray Adjustment Screws. NOTE: If your laptop is deeper than you can adjust for, swap out the Rear Tabs for the Offset Rear Tabs from the hardware bag.



8.) Make any adjustments needed to the Rear Tabs to allow access to any data ports which may have been blocked by the original clamp positions. Loosen the Rear Tab screws (but do not remove) as shown in the image below. Adjust the Rear Tab as needed by sliding side to side in the adjustment tracks. Re-tighten Rear Tab Adjustment Screws.



9.) Ensure that your laptop is properly secured on the A-MOD Desktop. Check that all screws have been tightened and all Tabs and Clamps are firmly touching your laptop so that there is no movement possible.

PRODUCT CUSTOMIZATION: (continued from page 6)

10.) Finally, to test the operation of the A-MOD Desktop, pull the Latch Release Handle toward you. Once the latch is activated and the Side Trays move outward, you should be able to lift the laptop from the A-MOD Desktop with ease without any Side Clamps blocking your access.



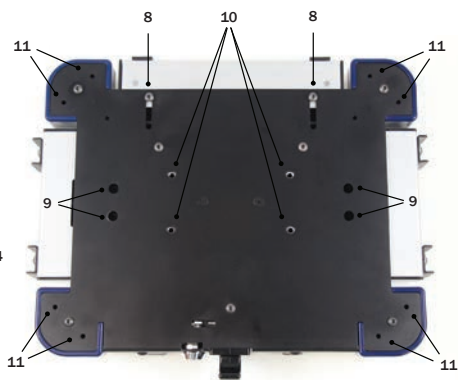
PRODUCT OPERATION:

Once fit is confirmed, install the A-MOD Desktop in your vehicle on your Jotto Desk mount. To lock the laptop on the A-MOD desktop, place laptop on the A-MOD Desktop and slide the Side Trays inward until latched and the Side Clamps are touching the laptop. Insert the Barrel Key into the Locking Mechanism and turn to lock. Remove the key from the locked position. For laptop retrieval, re-insert barrel key and turn to unlock. Pull the Latch Release Handle toward you releasing the Side Trays and remove the laptop.





PARTS & HARDWARE GUIDE:



TOP PANEL:

- 1.) Latch Release Handle
- 2.) Front Tabs
- 3.) Rear Tabs or Offset Rear Tabs
- 4.) Standard Clamps or Tall Clamps
- 5.) Side Trays
- 6.) Rear Tray
- 7.) Lock

BOTTOM PANEL:

- 8.) Rear Tray Adjustment Screws
- 9.) Side Tray Adjustment Screws
- 10.) Mounting Holes
- 11.) Strain Relief Holes

INCLUDED HARDWARE:

- 12.) Scratch Guard Bumpers
- 13.) Offset Rear Clamps
- 14.) Strain Relief Cables
- 15.) Barrel Keys
- 16.) Hex Key

