



INSTALLATION INSTRUCTIONS

13+ POLICE INTERCEPTOR UTILITY

Vehicle Partition Featuring Unidirectional Recessed Housing

Before beginning the installation, confirm that you have received all of the parts for your package. Read the instructions completely before starting installation.



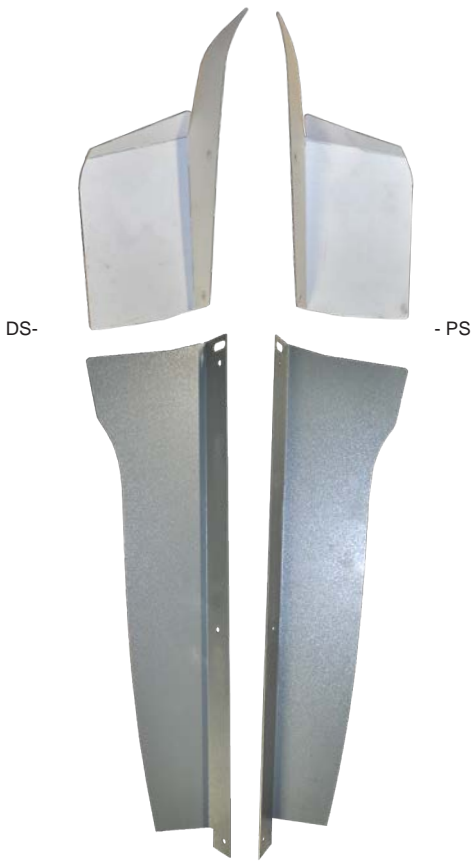
TOOLS NEEDED:

- Ratchet
- 7/16" Socket
- 13 mm Socket
- 7 mm Socket

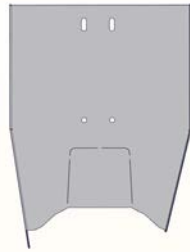


Parts Included:

- Hardware Bag With Necessary Nuts, Bolts, Etc.



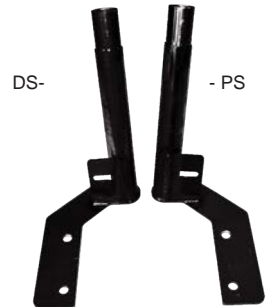
SCA Wings Set



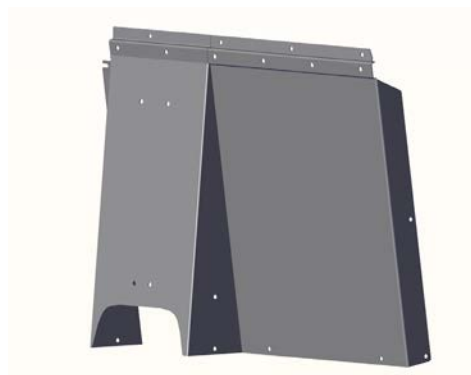
Center HSEP



(2) B Pillar Bracket



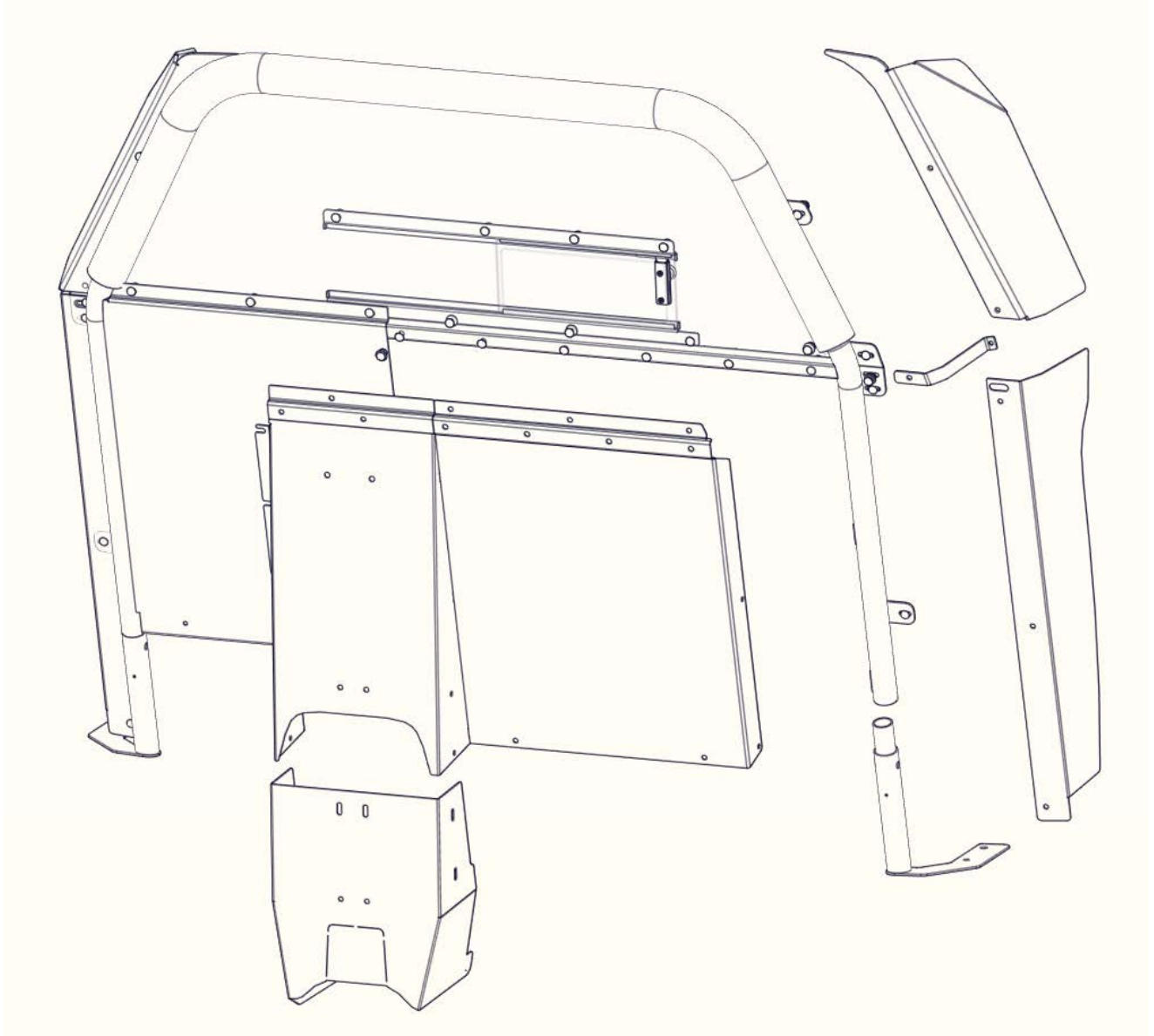
(2) Mounting Foot



Uni-Directional Recessed Housing



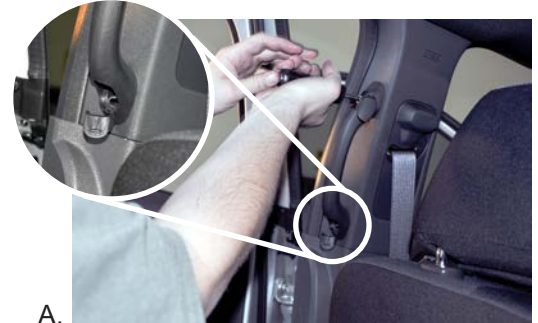
INSTALLATION INSTRUCTIONS





INSTALLATION INSTRUCTIONS

1. Pop the top/bottom covers of the rear seat grab handles, exposing (2) 7mm hex bolts. Remove bolts and remove handle completely. B-Pillar bracket will secure to the lower mount point and utilize OEM hardware. (Pic A)
2. Remove the front and rear door step plates from both Drivers and Passengers side of vehicle. (Pic B)
3. Using a small flat head screw driver – place in backside of lower seat belt assembly and turn counter clockwise. This will release seat belt from lower seat belt assembly. (Pic C)
4. Remove rubber tube/cover from lower seat belt assembly
5. Pop lower B Pillar trim out and remove from vehicle temporarily.
6. Remove 13mm seat belt bolt from lower seat belt assembly. (Pic D)
7. Place partition mount foot under lower seat belt assembly and re-install OEM 13mm bolt. (Pic E)
8. Re-attach lower B Pillar Trim, rubber tube/cover on lower seat belt assembly and snap seat belt back into lower seat belt assembly.



A.



B.



C.



D.



E.



INSTALLATION INSTRUCTIONS

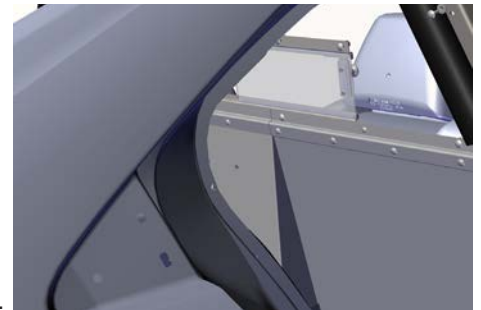
9. Attach B-Pillar Brackets to lower grab handle mount points on P/S and D/S (Pic F)
10. Place Partition frame WITHOUT Unidirectional Recessed Housing (UDRH) into rear of vehicle – placing the frame of the partition onto the mounting feet. **To avoid interference with headliner, remove blue protective film covering window at this time.** Push partition frame forward to the B Pillar Brackets and secure using the middle slot of the mounting tabs. (Pic G)
11. To avoid interference with headliner, remove protective film covering window at this time. Before you install the UDRH you will need to remove the lower window channel and sliding window by loosening the hand tightened carriage bolts and nuts. Remove and set aside for reuse. **NOTE: Half window partitions can go to Step 13. Full window with security wire partitions will require Step 12.**
12. **WHEN INSTALLING THE UDRH, BE CERTAIN UDRH THAT THE SAFETY-WIRE IS INSTALLED ON THE OUTSIDE OF THE UDRH. IT WILL BE NECESSARY TO PULL THE BOTTOM OF THE SAFETY-WIRE OUT SO THE UDRH CAN SLIP UNDERNEATH. (Pic H)**
13. Outside of vehicle, loosely attach the Center HSEP to the UDRH. With assistance, place the UDRH into the rear of the vehicle and secure the partition frame using the provided hardware. (Pic I)
14. Once the UDRH has been attached to the partition frame, replace lower window channel and sliding window. Secure with provided hardware.



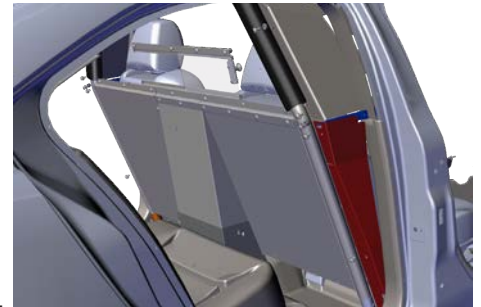
F.



G.



H.



I.



INSTALLATION INSTRUCTIONS

15. Install the optional D/S and P/S HSEP to the partition and UDRH, using provided hardware.
16. Attach Lower Steel Side Wings to BACK/PRISONER side of the mount tabs on the partition frame using provided hardware. Use the bottom hole of the middle tab. (Diagram 1)
17. Attach Upper Poly Wings to the FRONT/OFFICER side of the mount tabs. Use the top hole of the middle tab with a carriage bolt. The top of the Poly Wing should be secured with a carriage bolt as well. (Diagram 1)

