



2016+ CHARGER PURSUIT

ORDERING GUIDE

JOTTOPUBLICSAFETY.COM

DGS CONTOUR CONSOLE

DUTY GEAR SAVER

The Dodge Charger (2021+) DGS Contour Console (Duty Gear Saver) has a dash contouring shape and will fit all necessary communication and lighting equipment and extra room for your duty weapon. The installation of the Charger DGS Contour Console is quick and simple, utilizing OEM mounting points under the factory sensor cover plate. No drilling required. Console comes with 14" of faceplates. This Charger DGS Contour Console has been designed to accommodate our Mamba Mount (425-0150), Computer Side Mount (425-5542) with mounting locations for our Side Mounted Armrest (425-1849) and Tall Armrest (425-0029).



425-6687 DODGE CHARGER 2021+

Length37.51" Height.....10.15"
 Width.....13.51" Weight22.75 lbs
 Rated Capacity20" of face plates

- DGS Design (extra room for duty weapon)
- (1) 12V Outlet
- (1) Magnetic Mic
- Relocates OEM USB/AUX and 110 Outlet
- Driver's Side Knockout for Mounting Speaker
- Passengers Side Fuse Block w/Cover/Access Panel



CONTOUR CONSOLES

Jotto Desk™ developed the original Contour Console in 2001, revolutionizing console design. The Jotto Desk® team evaluates each vehicle and creates a custom console solution that maximizes available space, contours to the dash, and utilizes OEM mounting points.

CONTOUR CONSOLE - HORIZONTAL



425-6636 DODGE CHARGER 2011+

Length	37.56"	Height.....	10.03"
Width.....	13.70"	Weight	20 lbs
Rated Capacity 16" of face plates			

ACCESSORY ADAPTOR PLATE



425-6384 DODGE CHARGER 2011+

Rated Capacity 4" of face plates

The Accessory Adaptor Plate extends the Contour Console CC/CD Dodge Charger (2011+) 425-6175, relocates the OEM 12V Outlets (2) and USB Port.



Jotto Desk™

IPB CONTOUR CONSOLE

INTEGRATED PRINTEK/BROTHER

Integrated Printek/Brother Contour Consoles Dodge Charger (2016+) integrates a Printek/Brother PocketJet 6/7 Printer and paper roll for easy access for the officer.



Length 31.764" Height..... 9.583"
 Width..... 14.113" Weight 11.9 lbs
 Rated Capacity 15" of face plates (4" top & 11" bottom)



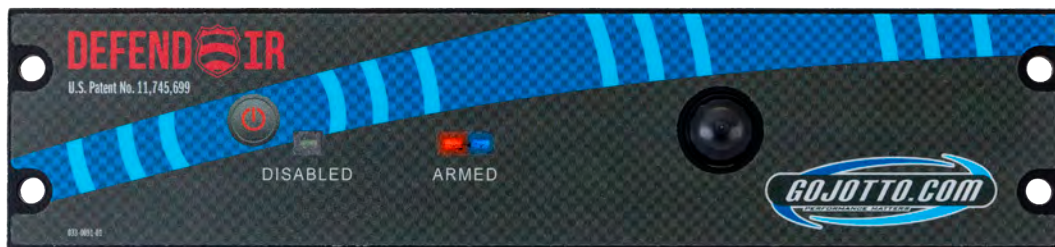
425-6485 DODGE CHARGER 2016+

IPB CONTOUR CONSOLE



425-6644 DODGE CHARGER 2016+

Length 31.89" Height..... 9.87"
 Width..... 13.93" Weight 14.10 lbs
 Rated Capacity 16" of face plates
 (6" top, 6" middle, 4" bottom)



425-6560 DEFEND IR U.S. PATENT NO. 11,745,699

CONSOLE ACCESSORIES

Our goal is to optimize your mobile office for performance and comfort. We make accessories that get the job done.

ALSO AVAILABLE

- 12V/USB Outlets
- Faceplates
- Storage
- Armrests
- Floor Plates
- Magnetic Mic Clips
- Cup Holders
- Printer Mounts



JOTTO DESK NO HOLES MOUNT

The A-MOD Desktop (Adjustable-Mobile Operations Desktop) has been created to be the ultimate desktop solution to secure a laptop computer in a mobile environment. The A-MOD desktop features a lightweight, yet rugged design that incorporates both high strength aluminum and composite materials where it makes sense. All of the Side and Rear Clamps are made of case-hardened steel and the lock is a high security, solid brass tubular lock giving you peace of mind knowing that your laptop is secured. The laptop tray will rotate 360 degrees at the end of the articulated arm enabling you to easily fine tune screen viewing.

- **Articulated Arm**
1" square x 6 3/4" solid aluminum; black anodized
- **Telescoping Rod**
7/8" x 12" steel with 5/8" turned swing arm rest
- **Stand**
1" x 10" 11 gauge steel, black; round stock
- **Height Variation**
20.5" - 25"
- **Base Mount**
3/16" gauge master, one-piece base with tapped 7/8" mounting post
- **Weight**
17.55 lbs



425-5640/4143



MAMBA MOUNT

CONSOLE SIDE MOUNT

Jotto Desk™ is upgrading and simplifying your on-duty experience with the Mamba Mount, a console side mount designed to work in each zone; **Store & Drive, Park & Work, and Tactically Safe.**



425-0150/4138

BUILT TO FIT:

CONTOUR CONSOLE
425-6636



D6S CONTOUR CONSOLE
425-6705



IPB CONTOUR CONSOLE
425-6485



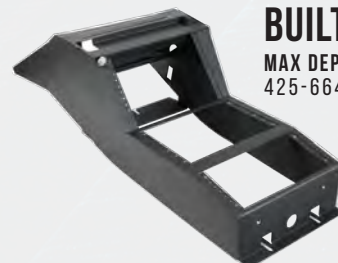
MAMBA MOUNT DCR



425-0022/4138

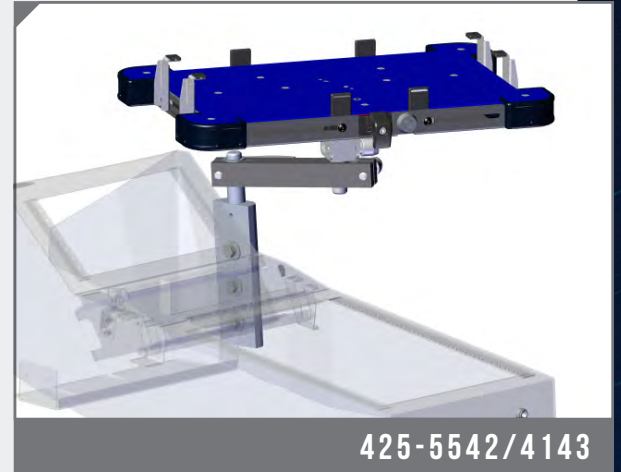
BUILT TO FIT:

MAX DEPTH IPB CONTOUR CONSOLE
425-6644



CONSOLE SIDE MOUNTS

The JOTTO DESK™ Console Side Mount (CSM) features No Holes Drilled installation on the passenger side of a compatible equipment console, preserving front passenger side leg room and improving performance. The CSM offers a straight arm which enables you to comfortably use and secure a laptop using the A-MOD or other desktop.



BUILT TO FIT:



A-MOD (ADJUSTABLE-MOBILE OPERATIONS DESKTOP)

450-4147 A-MOD w/GK PLATE & SHORT CLAMPS

Width.....11.25" to 13.625"
Depth9.25" to 11" (with extensions)
Clamp Height.....0.5" to 1.10" (Short Clamp)
Weight4.65 lbs (5.65 lbs with GK Plate)



450-4144 A-MOD XL w/GK PLATE & SHORT CLAMPS

Width.....13.5" to 16"
Depth9.25" to 11" (with extensions)
Clamp Height.....0.5" to 1.10" (Short Clamp)
Weight5.1 lbs (6.1lbs with GK Plate)



450-4153 A-MOD XL w/GK PLATE & TALL CLAMPS

Width.....13.5" to 16"
Depth9.25" to 11" (with extensions)
Clamp Height.....1" to 2.25" (Tall Clamp)
Weight5.1 lbs (6.1lbs with GK Plate)



450-4143 A-MOD W/GK PLATE & TALL CLAMPS

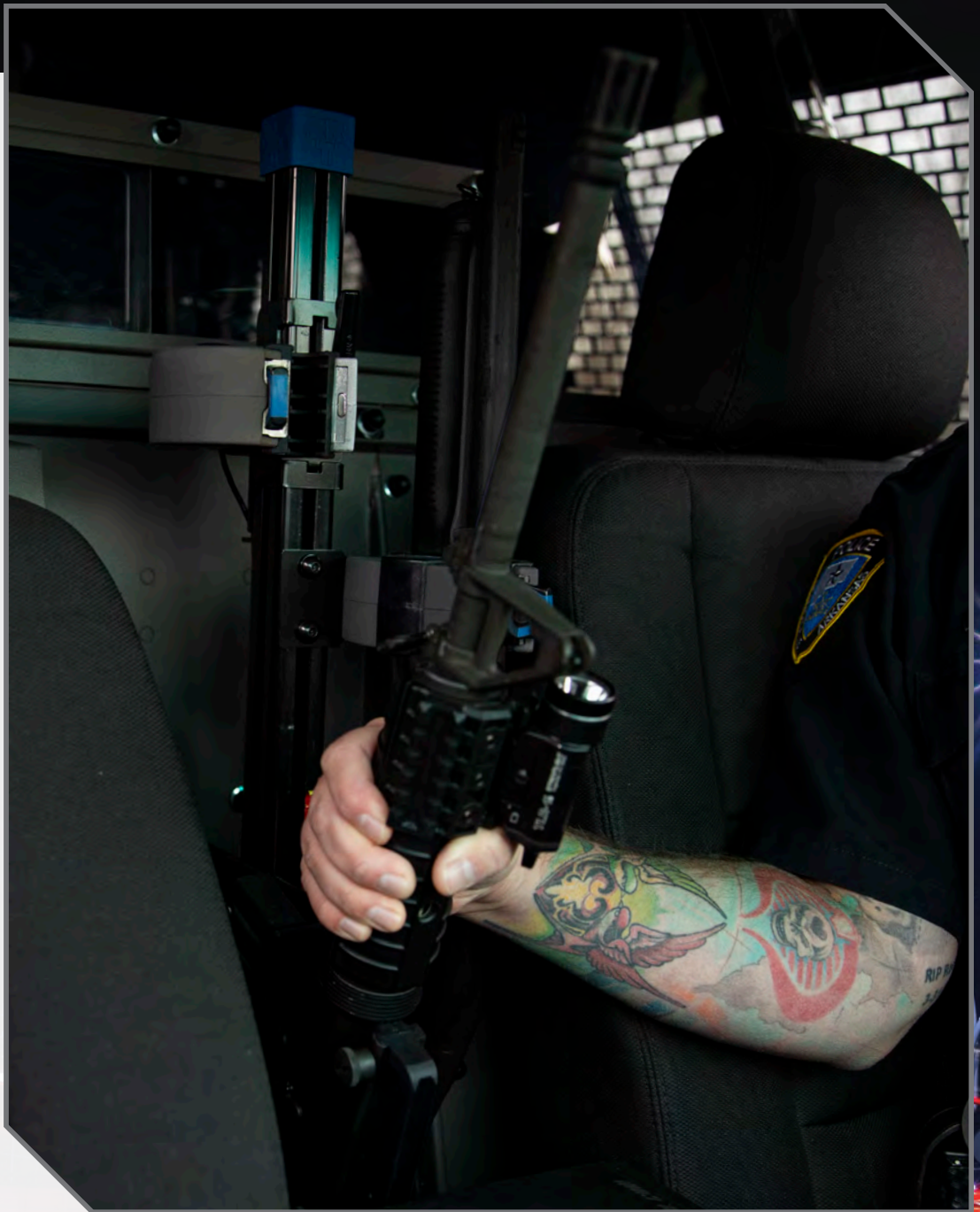
Width.....11.25" to 13.625" Clamp Height.....1" to 2.25" (Tall Clamp)
Depth9.25" to 11" (with extensions) Weight4.65 lbs. (5.65 lbs with GK Plate)

The A-MOD is engineered to be lightweight, yet rugged. Manufactured from steel, high strength aluminum, and composite materials where it makes sense. It's not real security if a laptop can be simply be stolen by jimmying the lock or bending the clamps. The A-MOD features a high-security solid brass tubular lock and case-hardened steel clamps.

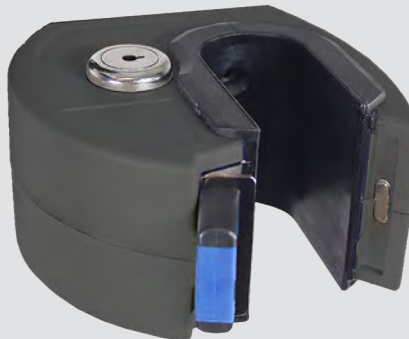
ZRT GUNS RACK

The ZRT Gun Racks are designed for any configuration you can imagine. Partition Mounted, Single Cell Mounted, Rear Seat Mounted or Free Standing, and Rear Hatch Mounted – Single Weapon or Dual.

- Eliminates 12V hot-wiring
- Cannot be defeated by magnets
- Zinc lock head design deforms instead of breaking
- Silicone inserts in lock head
- Protect weapon from damage
- Quickly adjust AR side along the strong extruded backbone to accommodate various stocks
- Single or dual weapon
- Plug and play lock head/timer wiring
- Compact size - 1/3 smaller than other lock heads
- Innovative slide latch recesses inside housing when accessing firearm



SMARTLOCK TECHNOLOGY

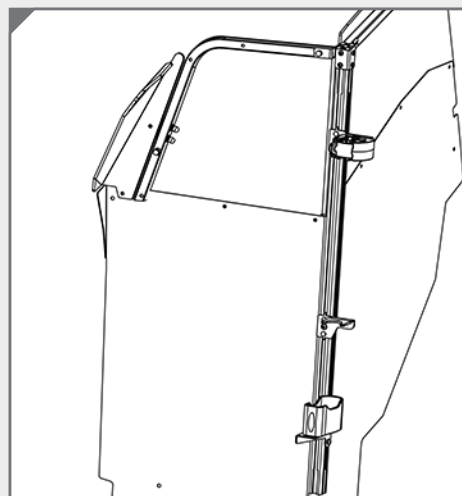


U.S. PATENT NO. 8,910,560 AND U.S. PATENT NO. 10,563,943

475-2010

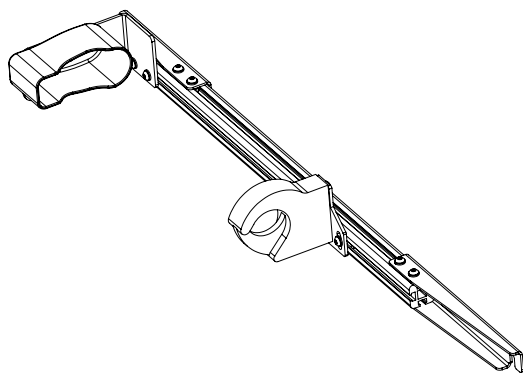


SINGLE CELL MOUNT



475-2048

REAR HATCH MOUNT



475-0964



Model #	Description	Location	Weapon	Style
475-2010	GR9-ZRT-AR BLM/870	Partition	Dual	Vertical
475-2063	GR9-ZRT-AR-GL3-XL/870	Partition	Dual	Vertical
475-2015	GR9-ZRT-AR-BLM-V	Partition	Single (AR)	Vertical
475-2014	GR9-ZRT-870-V	Partition	Single (870)	Vertical
475-2054	GR9-ZRT-DUAL-AR-BLM	Partition	Dual (AR)	Vertical
475-2053	GR9-ZRT-AR SECURE	Partition	Single (AR Secure)	Vertical
475-2052	GR9-ZRT-AR SECURE-BLM/870	Partition	Dual (AR Secure)	Vertical
475-2016	GR6-ZRT-DCR-AR BLM/870	Rear Seat	Dual	Vertical
475-2036	GR7-ZRT-DCR-870	Single Cell	Single (870)	Vertical
475-2048	GR7-ZRT-AR-BLM	Single Cell	Single (AR)	Vertical
475-2047	GR7-ZRT-AR-BLM-870	Single Cell	Dual	Vertical
475-0964	GR4-DCR-GL3 XL	Trunk	Single (AR/870)	Horizontal

VEHICLE PARTITIONS

Keep your officers safe while transporting prisoners with Jotto Desk's line of vehicle partitions. Our system allows your department to configure the partition to maximize the officer's workspace while providing safe transport of prisoners. The partition's no holes drilled system makes installation fast and easy.

SPACE CREATOR BIDIRECTIONAL VEHICLE PARTITION



475-0802 DODGE CHARGER 2011+

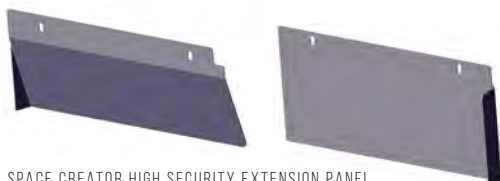


475-0803 DODGE CHARGER 2011+

Jotto Desk™ originated the Space Creator Vehicle Partitions (US Patent No. 8,690,216) to transform previously unusable space to create additional leg room behind the front passenger seat. The Bidirectional Recessed Housing (BDRH) creates unparalleled leg room for even large prisoners while maintaining excellent use of officer seat for complete comfort.

HSEP (HIGH SECURITY EXTENSION PANEL)

Enhance security by preventing rear passengers from reaching into the front of the vehicle under seats with a two-piece, steel High Security Extension Panel.



SPACE CREATOR HIGH SECURITY EXTENSION PANEL

475-0412 DODGE CHARGER 2011+



HIGH SECURITY/HIGH VISIBILITY WINDOW

A High Security/High Visibility (HS/HV) Window gives officers the best of both worlds - tremendous sight lines, whether looking out the rearview or turning around. The 4"H x 11"W window allows for communication or passing of information but there won't be anyone that will squeeze through this opening. If a prisoner spits/bleeds/smears the window - it is still easily cleanable...not so with "expanded metal".



UNIDIRECTIONAL VEHICLE PARTITION

475-3001..... 2011+ Dodge Charger Unidirectional Vehicle Partition with HS/HV window

475-3002..... 2011+ Dodge Charger Unidirectional Vehicle Partition with Safety Grid window

475-3003..... 2011+ Dodge Charger High Security Extension Panel

ABS SEATING



These space saving seats prohibit the accumulation and growth of body fluids and pathogens. Clean up seats quick with a spray and wipe sanitizer. When used with matching floor pan, fluids can be washed down the drain hole. Drain hole liner prevents fluid from flowing underneath floor pan. The gray color of our ABS Bio-Seat/Floor Pan help to reduce temperature buildup inside vehicle and the gray color provides ideal contrast to prevent contraband or weapons from being hidden.

The design of the Seat Belt Extenders positions the latch at an upward angle and the steel cable keeps it in position for seatbelting a prisoner in. The Seat Belt Extenders have been submitted for FMVSS 209 Compliance Testing by an independent laboratory and have been approved. Meeting Federal Motor Vehicle Safety Standards is critical to the safety and success of this product, and we are proud to have met that standard.



475-0322

WITH SEAT BELT
EXTENDERS

PRISONER BIO HAZARD TRANSPORT SEAT

475-0749



475-0323

WITH SEAT BELT
EXTENDERS

PRISONER BIO HAZARD TRANSPORT SEAT WITH FLOOR PAN

475-0232

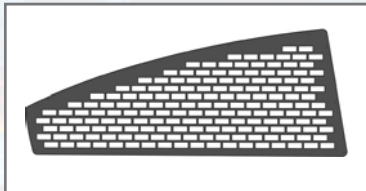
WINDOW & DOOR ARMOR

Protect your vehicles while transporting prisoners with the Jotto Desk™ line of Window Armor and Door Panels. The Window Armor is easy to install, prevents side windows from being kicked out and nobody can reach in or out of the prisoner compartment. Door Panels protect door mechanisms, prohibit contraband from being hidden, and are very easy to clean.



475-0420

SECURE GRID STYLE WINDOW ARMOR



475-0421

ABS DOOR PANELS



475-0231



SECURE-GRID WINDOW ARMOR & DOOR PANEL PACKAGE



VEHICLE MOUNTING SOLUTIONS

SINGLE CELL

The Dodge Charger Pursuit Single Cell includes the Front Divider, Center Divider, Passenger Side Window Armor & ABS Door Panel, and an ABS BioSeat, Floor Pan and Seat Belt Extenders. The bottom 2/3 of the rear divider and center divider is powder-coated steel with a built-in HSEP for added prisoner foot room. The upper 1/3 is polycarbonate and has been designed to allow for prisoner viewing/interaction but not diminish the driver's view out the rearview mirror. The ABS Bio Seat & Floor Pan offer the benefit of biohazard and contraband control with easy clean up when needed. Rather than "force" our customers to take products that they don't need, the Jotto Desk™ Single Cells comes with Window Armor and an ABS Door Panel for the passenger side only.



475-0184 DODGE CHARGER 2019+

SINGLE CELL LITE



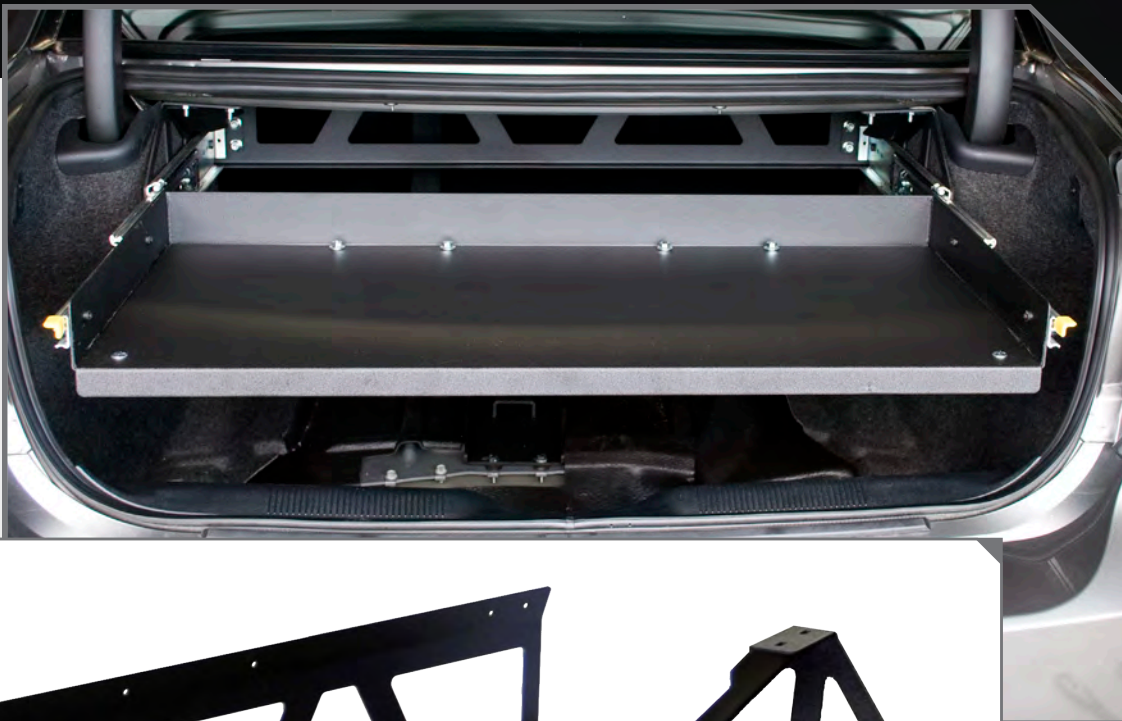
475-0986 DODGE CHARGER 2015+

The Dodge Charger (2015+) Single Cell Lite includes the Front Divider and Center Divider. The bottom 2/3 of the rear divider and center divider is powder coated steel with a built-in HSEP for added prisoner foot room. We didn't want to give prisoners a birds-eye view of the "good guy" side of the vehicle when you don't have to. The upper 1/3 is polycarbonate and has been designed to allow for prisoner viewing/interaction but not diminish drivers view out the rear view mirror. In fact, the visibility for an officer is nothing short of amazing.



TRUNK TRAY

The Dodge Charger Pursuit Trunk Tray increases trunk storage in the unique trunk setup of the Charger. Fleet managers, installers and officers need a means of safely stowing a wide range of equipment in the trunk of their police vehicles. This storage solution will help prevent damage to the vehicle and the equipment that can occur when a vehicle is in motion. The tray is constructed of steel with heavy duty ball bearing slides and utilizes a dual locking assembly that locks tray in place in it's open and closed position.



475-8103 DODGE CHARGER 2011+

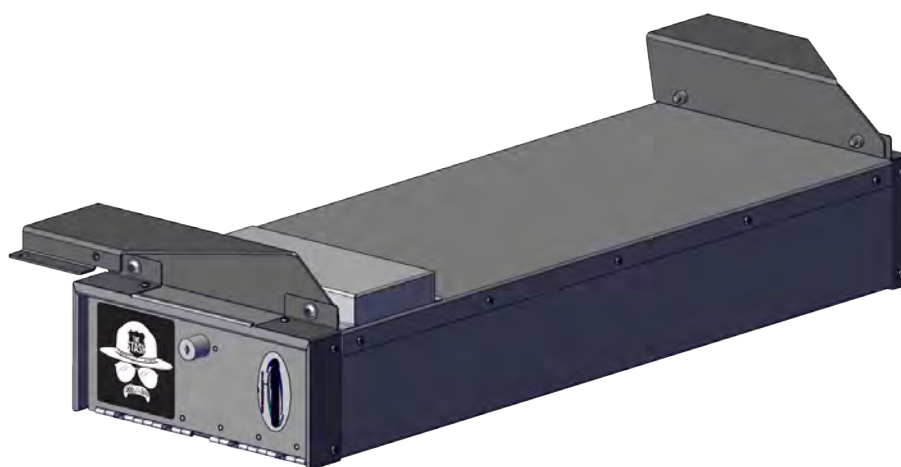


SPARE TIRE RELOCATION KIT

This Spare Tire Relocation Kit, improves the positioning of the full sized spare tire in Dodge Charger Pursuit vehicles. This relocation ensures proper trunk tray movement and full equipment mounting capability.



425-3759 DODGE CHARGER 2011+



475-2109

PATENT NO.: US 11,554,772

THE STASH, TRUNK, CHARGER 2012+

The Stash (Patent No.: US 11,554,772) was developed as a simple Single Weapon Storage Unit to be secured in the trunk of a 2016+ Dodge Charger... while maintaining the majority of the cargo area for other storage needed in a patrol vehicle.

This unique and quick access solution comes standard with a padded, nylon scabbard to protect the weapon and help ensure optics stay true. The scabbard performs double duty by allowing officers/deputies to bring a black bag into their residence or a range vs. carrying an exposed patrol rifle.

For quick access, the door can be opened utilizing either of two provided momentary switches. The door to the Stash features spring hinges, so the press of a momentary switch releases the actuator and lock...allowing the door to swing open. One switch, mounted out of sight to the Stash housing, allows the weapon to be accessed or secured once the rear hatch/trunk has been opened. The other switch can be hidden for drivers use, allowing the button to be pushed...opening the door 1-2". Upon stopping, simply opening the rear hatch/trunk lid will allow the door to spring open the remaining way and allowing access to the weapon.

DEFEND IR

You take every available precaution to secure your patrol vehicle; firearms in the gun rack, locking equipment and doors. The inconvenient truth is that the criminal element has time on their side to bypass these precautions.

Jotto Desk is excited to introduce the Defend IR Security System. The first Security Solution against patrol vehicle break-ins. The Defend IR Monitors the interior of your vehicle utilizing an infrared sensor when armed. When a change is detected, the Defend IR activates the lights and siren of the patrol vehicle, alerting everyone nearby and scaring off a potential thief.

U.S. Patent No. 11,745,699



209 W. EASY ST., ROGERS, AR 72756 • JOTTOPUBLICSAFETY.COM • 8/24

Jotto Desk™ is a patented product and Registered Trademark of Assembled Products™ Corporation.
Specifications subject to change without notice.

